

KEYNOTES

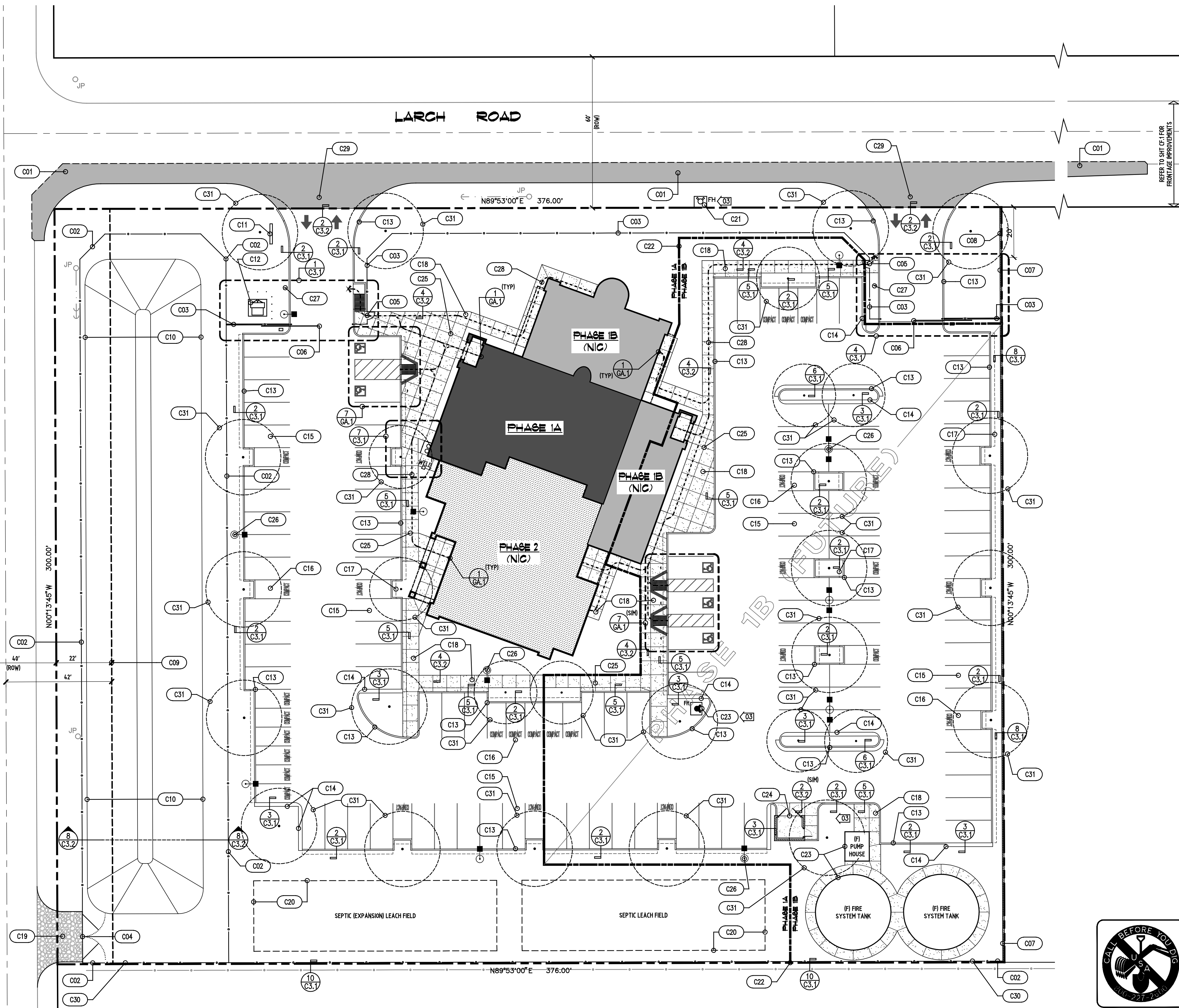
SYM	DESCRIPTION
C01	ROADWAY PAVEMENT WIDENING TO CONFORM TO SAN JOAQUIN COUNTY STD #R-3- SEE SITE LAYOUT & GRADING PLAN FOR DETAILS
C02	6' CHAIN-LINK FENCE W/ VINYL PRIVACY SLATS: SEE GENERAL NOTE 1
C03	6' CHAIN-LINK FENCE: SEE GENERAL NOTE 1
C04	STORM DRAIN POND MAINTENANCE ACCESS GATES: 18" OPENING W/ (2) 6" HTI x 9" C/L SWING GATES, VINYL PRIVACY SLATS & HDWE FOR PADLOCK: SEE GENERAL NOTE 1
C05	36" CHAIN-LINK SWING MAN-GATES W/ LEVER ACTION LOCKING HDWE PER GENERAL ACCESSIBILITY NOTE 1, SHT GA-1: SEE GENERAL NOTE 1
C06	6" AUTOMATIC CHAIN-LINK SLIDING GATE W/ 24" CLR OPENING, REFER TO ELECTRICAL PLANS FOR MOTOR & CONTROL: SEE GENERAL NOTE 4
C07	PRE-ENGINEERED 6" MASONRY WALL: SEE GENERAL NOTE 5
C08	REDUCE HT OF MASONRY WALL TO 36" FOR TRAFFIC CLEARZONE: 20' SETBACK AS SHOWN ON PLAN
C09	(F) RIGHT-OF-WAY
C10	STORM WATER RETENTION POND INSTALLED PER SAN JOAQUIN COUNTY STD #D-24: SEE GRADING & UTILITY PLANS
C11	MONUMENT SIGN UNDER SEPARATE PERMIT BY CONTRACTOR
C12	ELEC TRANSFORMER & PROTECTION BOLLARDS INSTALLED PER P&E REQ'S: SEE ELECTRICAL PLANS
C13	6" CONC CURB: SEE SITE LAYOUT & GRADING PLANS FOR DETAILS
C14	18" WIDE CONC CURB EXTENSION @ PARKING ADJACENT TO LS: SEE SITE LAYOUT & GRADING PLANS FOR DETAILS
C15	9'x20' (MIN) STANDARD PARKING SPACE: SEE GENERAL NOTE 2
C16	7.5'x16' (MIN) COMPACT PARKING SPACE: SEE GENERAL NOTE 2
C17	2' (MAX) PARKING SPACE OVERHANG: SEE GENERAL NOTE 2
C18	5" CONCRETE WALKS & FLATWORK W/ BROOM FINISH, SLOPE AWAY FROM STRUCTURES: SEE SITE LAYOUT & GRADING PLAN FOR DETAILS
C19	COMPACTED AGG BASE ALL-WEATHER DRIVE TO STORM POND ACCESS GATES: SEE SITE LAYOUT & GRADING PLANS FOR DETAIL
C20	SEWAGE DISPOSAL LEACH FIELDS: SEE UTILITY PLANS
C21	(RE) CITY OF TRACY FIRE HYDRANT: SEE UTILITY PLANS
C22	PROJECT PHASE LINE: PHASE 1B (NIC) - SEE SHEET C12
C23	PROJECT FIRE SYSTEM (NIC) FOR PHASE 1A: SEE SHEET C12
C24	PROJECT TRASH ENCLOSURE (NIC) FOR PHASE 1A: SEE SHEET C12 & GENERAL NOTE 3
C25	TOOLED CONTROL OR CONSTRUCTION JOINTS: SEE DETAIL 1, SHEET C3.2
C26	SITE LIGHT STANDARDS (NIC) IN PHASE 1B: SEE ELECTRICAL PLANS
C27	INSTALL H/C SITE ENTRANCE SIGN PER NOTE 12.4, SHEET GA.1
C28	ACCESSIBLE EXTERIOR PATH OF TRAVEL: REFER TO LEGEND AND NOTES, SHEET C0.1
C29	INSTALL DRIVEWAY ENTRANCE PER SAN JOAQUIN COUNTY STD #R-17
C30	INSTALL 2x RWD HDR @ CHAIN-LINK FENCE BASE
C31	SAN JOAQUIN COUNTY REQ'D PARKING AREA SHADE TREES: SEE LANDSCAPE PLANS
C32	xx
C33	xx
C34	xx
C35	xx
C36	xx
C37	xx
C38	xx
C40	xx

GENERAL NOTES

- CHAIN-LINK FENCING TO BE INSTALLED PER SAN JOAQUIN COUNTY STD #D-12 (SEE DET 3/SHT CF-2). WHERE INDICATED, VINYL PRIVACY SLAT COLOR TO BE SELECTED BY OWNER. CONTRACTOR TO PROVIDE ALTERNATE FOR BLACK VINYL COATED FENCE FABRIC, POSTS, GATES & HARDWARE
- ALL PARKING STALLS & STRIPING TO BE INSTALLED IN CONFORMANCE W/ SAN JOAQUIN COUNTY DEVELOPMENT TITLE, SEC NO 9-1W/5.5. PARKING SPACE STRIPING SHALL BE DELINEATED AS FOLLOWS:
 - STANDARD LINE DELINEATION - PAINTED WHITE 4" (MIN) IN WIDTH
 - COMPACT DELINEATION - PAINTED WHITE 8" HT x 4" STROKE LETTERS
 - D/W DIRECTIONAL ARROWS - PAINTED WHITE (SOLID) 72" LONG (MIN)
- INTERIM PHASE 1A REFUSE DISPOSAL WILL BE HANDLED W/ WHEELED TROTTERS AS PROVIDED BY THE LOCAL GARBAGE COLLECTION COMPANY
- THE CONTRACTOR SHALL INCLUDE A DESIGN-BUILD COMPLETION OF THE SITE ENTRANCE AUTOMATIC GATES. THE SLIDING GATES SHALL INCLUDE ALL DESIGN, LABOR & MATERIALS REQUIRED TO COMPLETE THE SYSTEMS. REFER TO THE ELECTRICAL PLANS & NOTE 20, SHT G0.2 FOR SUBMITTAL REQ'S. AUTOMATIC GATES SHALL INCLUDE THE FOLLOWING:
 - MOBILE WIRELESS OPEN & CLOSE CONTROL W/ (MIN) OF (6) DEVICES INCLUDED
 - WIRED SWITCH IN OFFICE W/ 'HOLD-OPEN', OPEN & CLOSE FUNCTIONS
 - MEET FIRE DEPT STANDARDS DEEMED NECESSARY BY THE FIRE CHIEF FOR RAPID, RELIABLE ACCESS, INCLUDING:
 - OPTICON RECEIVERS COMPATIBLE W/ OPTICON EMITTERS USED BY THE FIRE DEPT, WHICH WILL ACTIVATE THE GATE & OVERRIDE ALL COMMAND FUNCTIONS
 - BATTERY BACK-UP OR MANUAL MECHANICAL DISCONNECT READILY ACCESSIBLE TO EMERGENCY PERSONNEL IN-CASE OF POWER FAILURE
- THE CONTRACTOR SHALL INCLUDE A DESIGN-BUILD COMPLETION OF 6' PRE-ENGINEERED MASONRY WALL. WALL TYPE SHALL BE SELECTED BY OWNER. THE WALL SHALL INCLUDE ALL DESIGN, PERMITS, LABOR & MATERIALS REQUIRED TO COMPLETE THE SYSTEM. REFER TO NOTE 20, SHT G0.2 FOR SUBMITTAL REQ'S

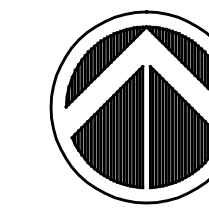
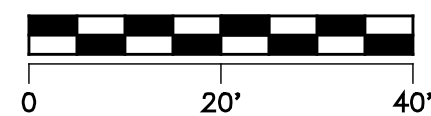
CORRAL HOLLOW ROAD

LARCH ROAD

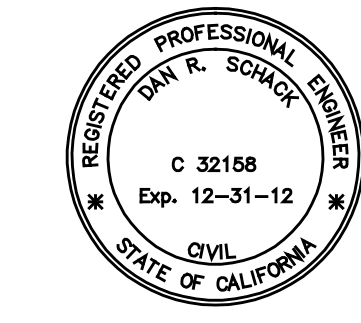


OVERALL/ALL-PHASE SITE PLAN

SCALE: 1"=20'



"REFERENCE ONLY" <02



DATE	REVISIONS	BY
08/17/12	01	SFS
08/17/12	02	SFS
08/17/12	03	SFS
11/02/12	04	SFS

DESCRIPTION	DATE
PRELIMINARY REVIEW	07/25/12
FINAL REVIEW	07/25/12
FINAL CONSTRUCTION	07/25/13

OVERALL SITE PLAN
PHASE 1A BUILDING & SITE IMPROVEMENTS
Darissa Iam Mosque
 Tracy Islamic Center
 21400 & CORRAL HOLLOW ROAD
 TRACY, CALIFORNIA 95304

Schack & Company, Inc.
 Civil Engineering • Building Design • Surveying
 (909) 885-2178 • P.O. Box 339 • Tracy, California 95378 • FAX (909) 885-1488

DATE	01/24/12
DRAWN BY	SFS
CHECKED BY	SFS
JOB NO.	07.047
C1.1	
OF 77 SHEETS	

I:\BCTT\Projects\0710\0710.dwg, 08/17/12, 8:46:46 AM, C1.2